



# Nike Dry Raglan Polo NKBV6047



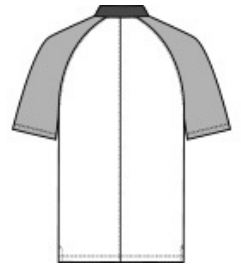
With bold contrasting collar and sleeves, this polo boasts raglan sleeves for easier movement and Dri-FIT moisture management technology to help keep you cooler and drier. Design features include a flat knit collar, two-button placket with dyed-to-match buttons, open hem sleeves, side vents and a back seaming detail. A contrast Swoosh design trademark is embroidered on the left sleeve. Made of 3.9-ounce, 100% polyester Dri-FIT fabric. \*\*

### CARE INSTRUCTIONS

Care instructions. Machine wash cold (30c). Wash inside out; wash with like colors, do not use softeners, do not use bleach, tumble dry low, do not iron, do not dry clean.



front



back

### HOW TO MEASURE







**CHEST**  
Measure under the arm and around the fullest part of the chest with arms down, keeping tape horizontal.

### SIZE CHART

	XS	S	M	L	XL	2XL	3XL	4XL
Chest	32-35	35-37 1/2	37 1/2 -41	41-44	44-48 1/2	48 1/2 -53 1/2	53 1/2 - 58	58-63

### COLOR INFORMATION

			
Black/ Anthracite PMS PROCESS BLACK C	Game Royal/ Midnight Navy PMS 661C	Gym Red/ Team Red PMS 187C	White/ Cool Grey PMS WHITE